

WISECRAFT NEXUS

Quality, Class & Uniqueness

www.wisecraftinternational.com

COMPANY PROFILE

www.wisecraftinternational.com

Table of Contents

04 **About Us**

05 **Vision, Mission, Core Values**

06 **Training & Capacity Building**

07 **Communication Consulting Services**

08 **Event Management Services**

09 **Business Support Services**

10 **The Team**

11 **Past Clients**

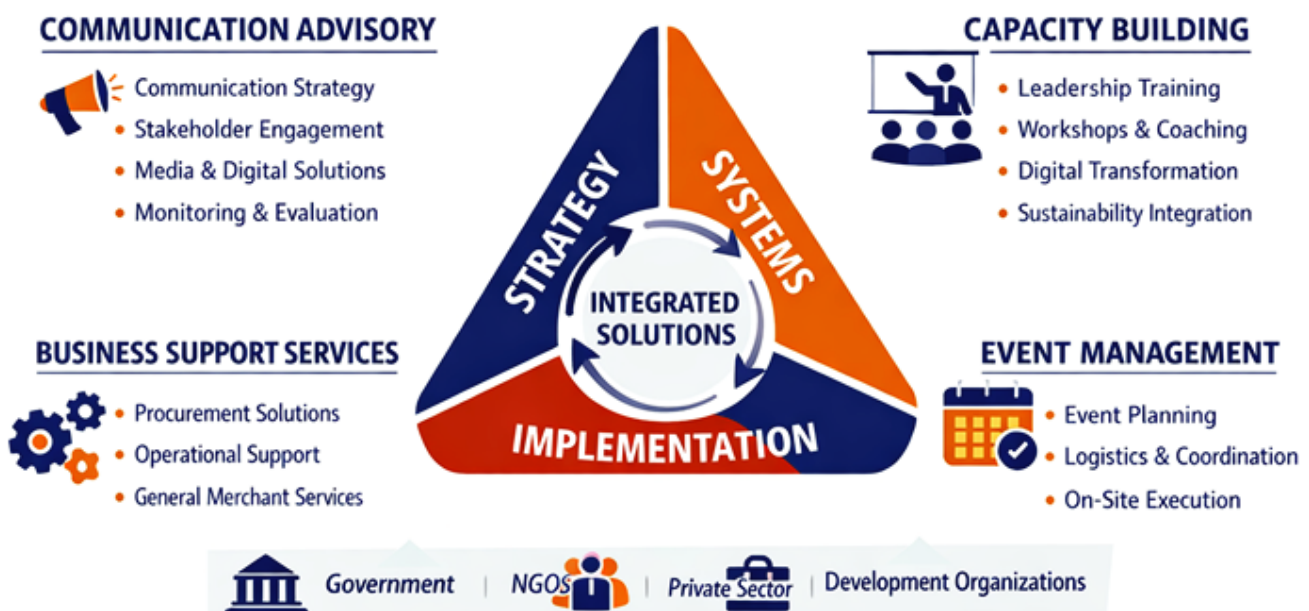




ABOUT US

About Us

Wisecraft Nexus is a multidisciplinary firm through which we provide communication advisory, institutional capacity building, events management and integrated business support services. We operate at the intersection of strategy, systems, and implementation, supporting organizations to strengthen how they communicate, engage stakeholders, and deliver results. Our work is grounded in structured methodologies, practical application, and alignment with institutional objectives, enabling our clients to move from fragmented approaches to coherent, results oriented systems.



We deliver training and capacity building programs aimed at strengthening competencies in communication, leadership, and emerging business areas. Our approach focuses on practical, application-oriented learning that enhances both individual and institutional performance.

We offer communication consulting services that provide advisory and implementation support to organizations seeking to strengthen communication systems, stakeholder engagement, and public positioning. We support clients to develop structured communication strategies, institutional frameworks and policies, and stakeholder engagement approaches aligned with institutional goals.

We also provide event management services, supporting organizations to design and deliver structured, well coordinated events that align with their strategic objectives. We manage the full event lifecycle including concept development, planning, logistics coordination, stakeholder engagement, content programming, and on site execution.

We complement our advisory and training functions with general merchant services, providing procurement and business support solutions including the supply of office equipment. This allows us to support our clients not only in strategy and capacity development but also in operational requirements, ensuring continuity between planning and execution.

We serve a diverse client base including government institutions, development organizations, private sector entities, and non governmental organizations. Our team brings together expertise in communication, strategy, training, and business operations, enabling us to deliver context specific and results driven solutions. We maintain a strong commitment to professionalism, quality assurance, and long term value creation, ensuring that each engagement contributes to sustainable institutional strengthening and measurable impact.



1. Training and Capacity Building

Wisecraft Nexus delivers structured training and institutional strengthening programs aimed at enhancing competencies in communication, leadership, and emerging business areas. The firm emphasizes practical, application-oriented learning that equips individuals and institutions with relevant skills while strengthening internal systems, ensuring that training translates into improved performance, informed decision making, and sustained institutional capacity.



Key training areas:

a. Communication design for institutions

- Internal and external communication systems
- Policy communication and public messaging
- Knowledge management and documentation systems

b. AI and Fourth Industrial revolution training

- Application of AI in communication and business operations
- Digital transformation strategies
- Data-driven decision making

c. Sustainability integration

- ESG communication and reporting
- Climate and sustainability positioning
- Stakeholder engagement for sustainability initiatives

d. Digital marketing and media

- Social media strategy and execution
- Content planning, analytics, and performance tracking
- Digital campaign design and management

e. Personal and corporate branding

- Executive positioning and visibility
- Thought leadership development
- Brand strategy and identity systems

f. Leadership and organizational development

- Strategic leadership and governance
- Team communication and performance management
- Change management and organizational culture

Delivery formats:

- Workshops and masterclasses
- Training of trainers programs
- Executive coaching and mentoring
- Institutional capacity development programs

2. Communication Consulting Services

Wisecraft Nexus provides advisory and implementation support to organizations seeking to strengthen their communication systems, stakeholder engagement, and public positioning. The firm supports clients to develop structured, coherent communication approaches that align messaging with institutional objectives, enhance stakeholder trust, and improve visibility across platforms, moving from fragmented practices to integrated, strategy-driven systems with measurable outcomes.

Core services:

- Communication strategy development
- Institutional communication frameworks and policies
- Stakeholder mapping and engagement strategies
- Development communication and advocacy design
- Content development, documentation, and knowledge products
- Media relations and visibility management
- Digital communication systems and platform integration
- Communication monitoring, evaluation, and learning

Focus areas:

- Public sector and government communication
- Development and sustainability communication
- Corporate communication and reputation management
- Crisis and risk communication



3. Event Management Services

Wisecraft Nexus provides end to end event management services that support organizations to design, plan, and deliver structured events aligned with their strategic, communication, and stakeholder engagement objectives. The firm ensures that events are not only well coordinated but also serve as platforms for knowledge exchange, visibility, and institutional positioning, integrating content, logistics, and stakeholder experience into a coherent delivery process.

Core services:

- Event concept development and design
- Event strategy alignment with institutional objectives
- Program development and agenda setting
- Stakeholder identification, mapping, and engagement
- Speaker sourcing, coordination, and management
- Event communication and visibility planning
- Logistics planning and coordination
- Vendor sourcing and management
- On site event management and execution
- Post event reporting, documentation, and knowledge products

Focus areas:

- Conferences, forums, and high level policy dialogues
- Workshops, trainings, and capacity building sessions
- Product launches and corporate events
- Development sector convenings and stakeholder engagements
- Hybrid and virtual events



4. Business Support Services

Wisecraft Nexus provides integrated procurement and business support services that complement its consulting and training functions. The firm enables organizations to access reliable products and operational support while aligning procurement, branding, and logistical needs with broader institutional objectives, ensuring efficiency, consistency, and value for money.

Service components:

- Supply of office and institutional equipment
- Branding, printing, and promotional materials
- ICT equipment and digital solutions sourcing
- Event logistics and support services
- Enterprise and operational support services

Value proposition:

- Reliable sourcing and supply networks
- Integration of communication, branding, and operational needs
- Cost-efficient and scalable solutions

Positioning Statement

Wisecraft Nexus operates as an integrated solutions partner, combining communication expertise, capacity development, events management and business support services to enable organizations to function more effectively, communicate more strategically, and deliver sustainable impact.



5. The Team



SOLOMON IRUNGU
TEAM LEAD



MARIAM MAINA KAMAU
CO-LEAD



JULIET WAMBUI
SENIOR CONSULTANT



LESHAN WAITHERA
CONSULTANT



MOSES KIMEMIA
CONSULTANT




SHEILA WAIRIMU
CONSULTANT



NOEL ODUOR
CONSULTANT

Past Clients



A vintage-style pocket watch with Roman numerals and a magnifying glass over an old map. The watch face is visible in the lower half, showing Roman numerals from III to IX and a compass rose with 'N' for North. The magnifying glass is positioned in the upper right, focusing on a section of an old map. The background is a dark, textured surface, possibly a book cover or a map.

Take your organization to the next level by working with us. Curious about how we can partner?

Reach out.

E: consult@wisecraftinternational.com

T: +254 725 961 921

www.wisecraftinternational.com